

PALLET RACK ENCLOSURE

PALLET RACK SOLD SEPARATELY



HUSKY
RACK & WIRE™



Husky Rack & Wire makes continuous improvements in all its products. We reserve the right to change specifications without notice. Photos and illustrations may contain standard and optional equipment

Warranty Information for warranty information applicable to all our products, refer to the Husky Rack & Wire terms and conditions of sale, which are accessible at www.huskyrackandwire.com/terms-conditions.

704-483-1900
www.HuskyRackandWire.com

6146 Denver Industrial Park Rd
Denver, NC 28037
Previously Wireway Husky Corp
All Rights Reserved

DOOR OPTIONS

DOUBLE SWING DOOR

DOUBLE SLIDE DOOR

STANDARD PADLOCK HASP INCLUDED FOR BOTH DOOR STYLES
(PADLOCK NOT INCLUDED)

DOUBLE SWING DOORS	
W x H	PART NO.
96" x 96"	PRD40096096
96" x 120"	PRD40096120
96" x 144"	PRD40096144
108" x 96"	PRD40108096
108" x 120"	PRD40108120
120" x 96"	PRD40120096
120" x 120"	PRD40120120
120" x 144"	PRD40120144
144" x 96"	PRD40144096



DOUBLE SLIDE DOORS	
W x H	PART NO.
96" x 96"	PRD52096096
96" x 108"	PRD52096108
96" x 120"	PRD52096120
108" x 96"	PRD52108096
108" x 108"	PRD52108108
108" x 120"	PRD52108120
120" x 96"	PRD52120096

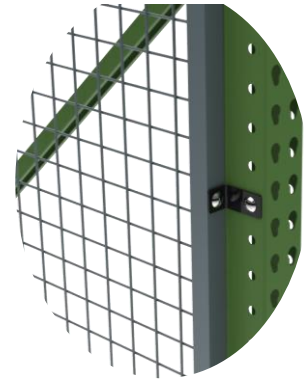
SIDE PANELS

USED AT THE END OF AISLES



SIDE PANELS	
W x H	PART NO.
30-1/2" x 96"	RGS0300809600
30-1/2" x 108"	RGS0300810800
30-1/2" x 120"	RGS0300812000
36-1/2" x 96"	RGS0360809600
36-1/2" x 108"	RGS0360810800
36-1/2" x 120"	RGS0360812000
42-1/2" x 96"	RGS0420809600
42-1/2" x 108"	RGS0420810800
42-1/2" x 120"	RGS0420812000

- USED WITH 36" DEEP UPRIGHTS
- USED WITH 42" DEEP UPRIGHTS
- USED WITH 48" DEEP UPRIGHTS



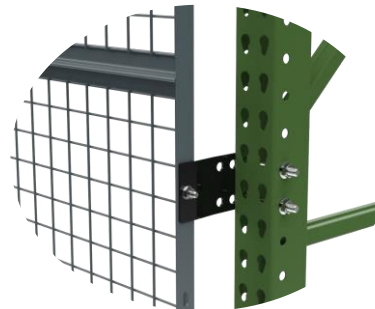
MOUNTING HARDWARE INCLUDED

BACK PANELS

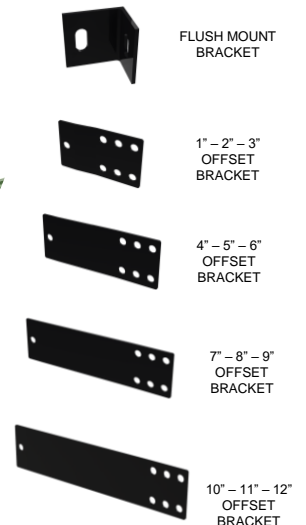
USED ON THE BACK SIDE OF BAYS



BACK PANELS		
LENGTH "XX" = BEAM LENGTH IN FT.		
W x H	PART NO.	OFFSET
"X" x 3'	RGCXX03F	FLUSH MOUNT
"X" x 3'	RGCXX03A	1" - 2" - 3"
"X" x 3'	RGCXX03B	4" - 5" - 6"
"X" x 3'	RGCXX03C	7" - 8" - 9"
"X" x 3'	RGCXX03D	10" - 11" - 12"
"X" x 4'	RGCXX04F	FLUSH MOUNT
"X" x 4'	RGCXX04A	1" - 2" - 3"
"X" x 4'	RGCXX04B	4" - 5" - 6"
"X" x 4'	RGCXX04C	7" - 8" - 9"
"X" x 4'	RGCXX04D	10" - 11" - 12"
"X" x 5'	RGCXX05F	FLUSH MOUNT
"X" x 5'	RGCXX05A	1" - 2" - 3"
"X" x 5'	RGCXX05B	4" - 5" - 6"
"X" x 5'	RGCXX05C	7" - 8" - 9"
"X" x 5'	RGCXX05D	10" - 11" - 12"



MOUNTING HARDWARE INCLUDED
(1"-2"-3" OFFSET SHOWN ABOVE)



RACK GUARD PANELS CAN EXTEND OVER THE TOP OF THE UPRIGHTS UP TO 2' WITHOUT REQUIRING AN EXTENSION. IF OVER 2' A MAX OF 4' EXTENSION CLIPS ARE REQUIRED.